



**ENTOMOLOGICAL
SOCIETY OF AMERICA**
SHARING INSECT SCIENCE GLOBALLY

Media Guide 2022

Updated October 14, 2021. Check for latest version at www.entsoc.org/journalist-resources

Entomology is all around us.

More than half of all multicellular species on Earth are insects and related arthropods, with at least 1.5 million species known to science—and millions more awaiting discovery or description.

Insects play influential roles in a multitude of ecosystems, serving as pollinators, nutrient recyclers, sources for new genetic and medical breakthroughs, and food for other organisms, including humans. Some are also pests and carriers of disease.

Entomologists are the scientists who study and work with insects and related arthropods, and their pursuits advance human well-being and scientific knowledge every day.

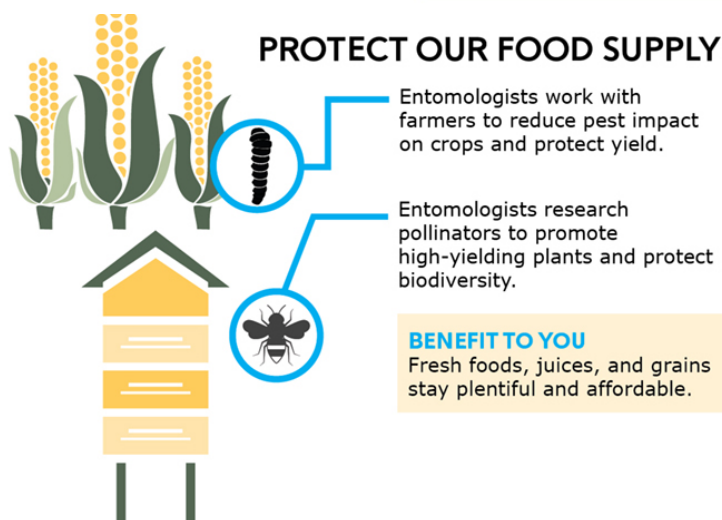
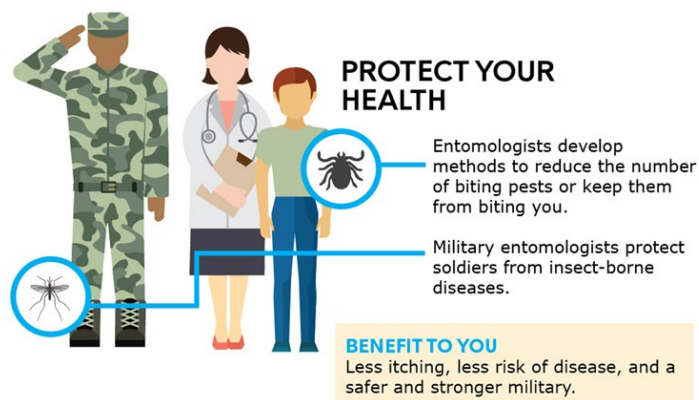
About ESA

- Founded in 1889, ESA is the largest organization in the world serving the professional and scientific needs of entomologists and individuals in related disciplines.
- ESA has more than 7,000 members affiliated with educational institutions, health agencies, private industry, and government.
- ESA is a 501(c)(3) nonprofit professional society governed by a board composed of members.
- Headquartered in Annapolis, Maryland, ESA stands ready as a non-partisan scientific and educational resource for all insect-related topics.

More info:

- www.entsoc.org/about/esa
- www.entsoc.org/sci-pol/resources

What Can an Entomologist Do for You?

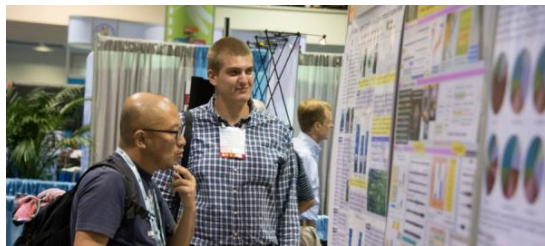


The Premier Organization for Entomologists

Membership. ESA members belong to a community of more than 7,000 of their peers from around the world and enjoy benefits such as free online access to ESA's expansive library of entomological research going back to the early 1900s, opportunities to publish and present research via ESA's journals and conferences, and a wide range of professional development resources and volunteer opportunities.



Publications. ESA's family of entomological journals brings together a broad range of high-quality research from throughout the world. ESA members receive complete electronic access to all back issues of the journals.



Meetings. Every year, more than 3,000 entomologists and other scientists gather to exchange scientific information at the ESA Annual Meeting. A program of symposia, conferences, submitted papers, and continuing education seminars provides attendees the opportunity to hear and present research affecting the science today.



Certification. ESA offers two certification programs: Board Certified Entomologist (BCE), for professional entomologists with degrees in entomology or a closely-related field; and Associate Certified Entomologist (ACE), for pest management professionals with strong training and experience in insect-related work but without the academic training of

required of professional entomologists.

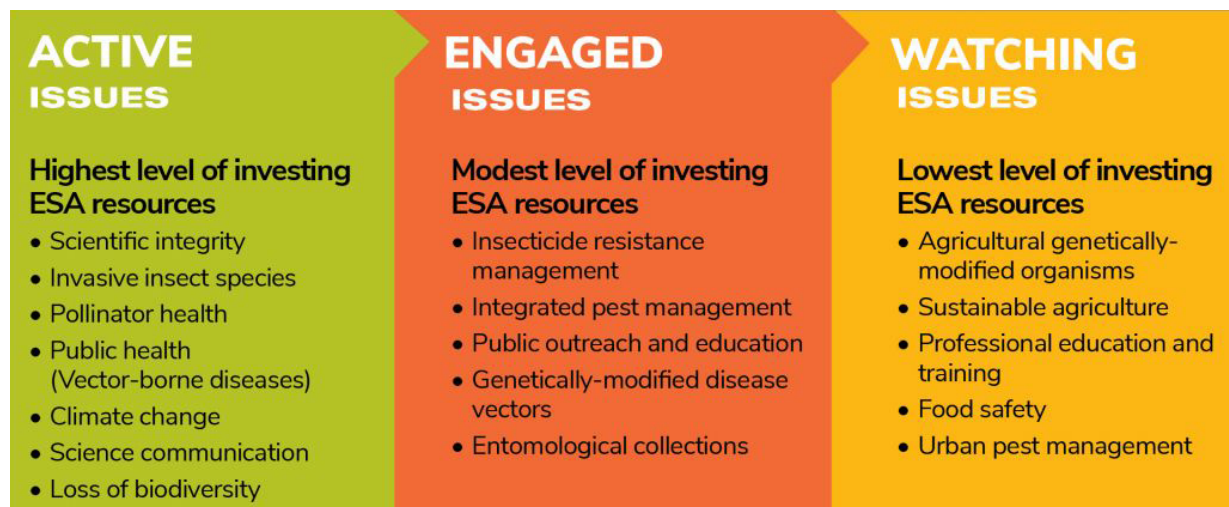
Chrysalis Fund. The Chrysalis Fund develops the next generation of entomologists by providing grants to support programs that foster children's curiosity about the world and encourage educators to use insects in the classroom as a low-cost and science-intensive way to teach biology, art, math, and many other subjects.



Entomologists Stand Up for Science

As a non-partisan scientific organization, ESA represents a broad spectrum of opinions united under one principle: the promotion and advancement of scientific inquiry, discovery, and communication.

To support its efforts, ESA joins coalitions of scientific societies; employs policy specialists; provides lawmakers, agency leaders, and the public with accurate science; and supports programming to educate entomologists about the importance of scientific advocacy.



ESA Position Statements

Representing the consensus view of ESA members on vital matters of public policy:

- [Invasive Species](#) (November 12, 2020)
- [Integrated Pest Management](#) (September 10, 2020)
- [Insecticide Resistance Management](#) (July 30, 2020)
- [Insect Resistance Management in Genetically Modified Crops](#) (June 29, 2020)
- [Entomological Collections](#) (revised December 9, 2019)
- [Pollinator Health](#) (revised October 15, 2019)
- [Importance of Gene Drive Research](#) (September 12, 2019)
- [Tick-Borne Diseases](#) (revised June 27, 2019)
- [Global Climate Change](#) (January 25, 2019)
- [Arthropod Biodiversity](#) (October 19, 2017)
- [Endangered Insect Species](#) (June 22, 2017)

Find ESA position statements, fact sheets, and infographics at www.entsoc.org/sci-pol/resources.

More info:

- www.entsoc.org/esa-science-policy
- www.entomologychallenges.org

ESA Leadership

The Governing Board of ESA consists of elected officers, representatives elected from each Branch and Section, a student representative, and the Executive Director as a non-voting, ex officio member. Below is the ESA Governing Board roster for the term beginning November 2021 and ending November 2022.

Dr. Jessica L. Ware	American Museum of Natural History	President
Dr. Marianne Alleyne	University of Illinois at Urbana-Champaign	Vice President
Ms. Jennifer Henke	Coachella Valley Mosquito and Vector Control District	Vice President-Elect
Ms. Michelle S. Smith, BCE	Dow AgroSciences	Past President
Dr. Faith Oi	University of Florida	Treasurer
Dr. Mustapha Debboun	Mosquito & Vector Control Division, Harris County Public Health	MUVE Section Rep.
Dr. Richard W. Mankin	USDA ARS CMAVE	PBT Section Rep.
Dr. Melissa Willrich Siebert	Corteva Agriscience	P-IE Section Rep.
Dr. Andrew Short	University of Kansas	SysEB Section Rep.
Dr. Don Weber	U.S. Department of Agriculture – Agricultural Research Service	Eastern Branch Rep.
Dr. Julien Saguez	Centre de Recherche sur les grains, Inc.	International Branch Rep.
Dr. John R. Ruberson	University of Nebraska	North Central Branch Rep.
Mr. Todd Murray	Washington State University	Pacific Branch Rep.
Dr. Karla Adesso	Tennessee State University	Southeastern Branch Rep.
Dr. Jesus Esquivel	U.S. Department of Agriculture – Agricultural Research Service	Southwestern Branch Rep.
Ms. Sallqa-Tuwa Stephanita BondocGawa Mafla	Rutgers University	Student Rep.
Chris Stelzig, CAE	Entomological Society of America	Executive Director



Jessica L. Ware, Ph.D., is assistant curator of invertebrate zoology at the American Museum of Natural History. Jessica's research centers on the evolution of behavioral and physiological adaptations in insects, with an emphasis on dragonflies, damselflies, termites, and cockroaches. She previously served as ESA Systematics, Evolution, and Biodiversity Section president (2014) and representative to the ESA Governing Board (2017–2020). Jessica earned a B.S. in zoology at the University of British Columbia (2001) and a Ph.D. in entomology at Rutgers University (2008).



Chris Stelzig, CAE, ESA executive director, has worked with ESA as a staff member and consultant for more than 20 years. In 2004, Chris oversaw the launch of ESA's Associate Certified Entomologist program, which has steadily grown to more than 1,200 certified pest management professionals. He was also instrumental to the formation of ESA's science policy program; the Vector-Borne Disease Network, a coalition of more than 20 like-minded organizations working to reduce the impact of vector-borne diseases; and ESA's Grand Challenges Agenda for Entomology.

For News Media

Joe Rominiecki | Manager of Communications | jrominiecki@entsoc.org | 301-731-4535 x3009

Need an insect expert to interview? ESA has member entomologists ready and eager to speak with the media on any of the following topics. (Don't see what you need here? Just ask!)

ants
applied ecology
bed bugs
beetles
biodiversity
biological control
brown marmorated stink bug
bumble bees
butterflies and moths
cicadas
cockroaches
collections
delusory parasitosis
emerald ash borer
entomology science policy
flies

forest entomology
garden/greenhouse pest management
general medical entomology
general urban pest control
genetic engineering (insects)
grasshoppers and katydids
honey bees
insect ecology
insect pathology
insect-inspired tech (biomimicry)
insects as food and feed
integrated pest management
invasive species
mites



mosquitoes
pesticides
plant-insect interactions
pollinators
praying mantids
public outreach
spotted wing drosophila
stored product pests
termites
ticks
urban entomology
veterinary entomology

Need an insect image? While ESA does not have an insect photo repository, we recommend the following resources for high-quality, accurate arthropod imagery:

- Bugwood.org: www.bugwood.org (Center for Invasive Species and Ecosystem Health at the University of Georgia)
- Insects Unlocked: www.flickr.com/photos/131104726@N02/ (University of Texas Insect Collection)
- Public Health Image Library: <https://phil.cdc.gov/phil/home.asp> (Centers for Disease Control and Prevention)



What's in a name? Insects often earn a variety of colloquial nicknames, but ESA formally recognizes specific common names for more than 2,000 well-known or impactful species. See the ESA Common Names Database at www.entsoc.org/common-names.

More info:

- www.entsoc.org/journalist-resources
- www.entsoc.org/resources/press_releases

Find ESA Online



Entomological Society of America www.entsoc.org



ESA Certification Corporation www.entocert.org



Entomology Today blog www.entomologytoday.org



Twitter www.twitter.com/entsocamerica



Facebook www.facebook.com/entsoc



Instagram www.instagram.com/entsocamerica



YouTube www.youtube.com/entsoc